



Twin Falls Archway Project Ad Hoc Citizens Advisory Committee Agenda

Thursday, October 3, 2019, 8:45 AM

203 Main Avenue East
Twin Falls, ID 83301
Council Chambers

Members: Jeanette Roe, John Kapeleris, Leonard Anderson, Paula Brown Sinclair, Rex Lytle, Tony Prater, Ruth Pierce, Melissa Crane

Facilitator: Kathy Markus

Advisors: Greg Middlekauff, Micah Campbell, and Nikki Boyd

Staff: Mitch Humble, Lisa Strickland

- 1) Confirmation of Quorum/Call Meeting to Order
- 2) Consent Calendar
 - a) **ACTION ITEM:** Approval of Minutes from the following meeting: July 17, 2019
- 3) Items for Discussion
 - a) **DISCUSSION:** Lytle Bid
By: Kathy Markus
 - b) **DISCUSSION:** Fundraising & \$15,000 From Rotary Club of Twin Falls
By: Kathy Markus
 - c) **DISCUSSION:** Archway Recognition Circles
By: Kathy Markus
 - d) **DISCUSSION:** Next Steps
- 4) General Input/Announcements - Public/Staff
- 5) Upcoming Meeting(s)
- 6) Adjournment

Any person(s) needing special accommodations to participate in the above-noticed meeting could contact Kathy Markus (208) 735-7222 at least two working days before the meeting. Si desea esta información en español, llame Leila Sanchez (208) 735-7287.



Twin Falls Archway Project Ad Hoc Citizens Advisory Committee Minutes

Wednesday, July 17, 2019, 8:45 AM

203 Main Ave E.
Twin Falls, ID 83301

Members: Jeanette Roe, John Kapeleris, Leonard Anderson, Paula Brown Sinclair, Rex Lytle, Tony Prater, Ruth Pierce, Melissa Crane

Facilitator: Kathy Markus

Advisors: Greg Middlekauff, Micah Campbell, and Nikki Boyd

Staff: Mitch Humble, Lisa Strickland

1) Confirmation of Quorum/Call Meeting to Order

IT Director Kathy confirmed quorum and called the meeting to order.

2) Consent Calendar

a) Approval of Minutes from the following meeting: June 6, 2019

Member Roe made a motion to approve the consent calendar, as presented, Member Sinclair seconded the motion

Unanimously Approved

3) Items for Discussion

a) City Council Meeting Update on Archway Modification

Anderson reviewed the discussion that occurred at City Council and there was an article on the front page of the Times News.

IT Director Markus explained the funds for the Archway has \$150,000.00 to be dedicated to the project, this should be approved August 26, 2019. The bid for the project should be available to the public by July 18, 2019 and will end August 29, 2019.

b) Fundraising Update

IT Director Markus, stated there are two (2) grants outstanding.

Member Anderson explained the the County will be putting \$20,000 in the budget.

IT Director Markus stated that she would like to send out thank you notes to the larger donors.

Member Pierce suggested a ground breaking once the Bid has been negotiated and approved.

Member Anderson explained that he will ask Times News to amend the article and give the public information on how to make a donation.

Member Pierce suggested a deadline on donations.

IT Director Markus explained she would like to extend the donation period to the date of the ground breaking.

4) General Input/Announcements - Public/Staff

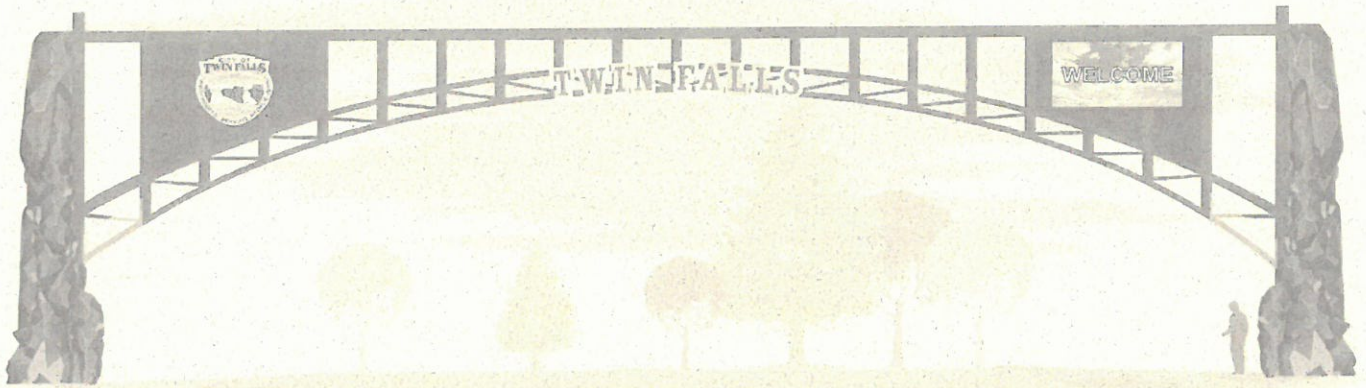
None

5) Upcoming Meeting(s)

October 3, 2019 .

6) Adjournment

Lisa A. Strickland, Administrative Assistant



A S I G N P R O P O S A L E X C L U S I V E L Y F O R
City of Twin Falls • Entry Archway with Message Boards

PROPOSAL#: IT201901

CONTACT: Brandon Byce





August 29, 2019

Re: City of Twin Falls Archway Project Bid

Ladies and Gentleman,

It is with great pride that the 85 employee owners of Lytle Signs, Inc. submit our bid proposal for consideration. We believe we have offered a comprehensive proposal closely following the RFP instructions provided by the City of Twin Falls.

Due to the fact that some work on the Archway Project may be donated by local contractors as noted in the RFP, we wanted to take this opportunity to clarify for bid reviewers costs currently included in our proposal.

We chose to keep the cost of possibly donated work, such as excavation for example, in our proposal so that a full and true cost of the project would be represented. Should any of the donated work come to fruition, Lytle Signs will gladly deduct the cost of that work from our proposal. We believe that in addition to giving bid reviewers a full representation of total project cost, this will also allow all involved to prevent change orders from occurring should one or several of these pledged work donations not come to pass for one reason or another.

Thank you again for the opportunity to bid the Archway Project and we look forward to working with the Committee, The City of Twin Falls and Twin Falls County on what will ultimately be a legacy project for our community.

Sincerely,

JJ McBride
President
Lytle Signs, Inc.



2.1 LETTER OF TRANSMITTAL

PROJECT

Archway with Message Boards #IT201901

COMPANY

Lytle Signs Inc. PO Box 305, Twin Falls, ID 83303

PRIMARY CONTACT

Mel Stokesberry – Field Engineer 208-420-9133 mel@lytlesigns.com

Stacy Mavencamp – Engineering Supervisor 208-421-1976 stacy@lytlesigns.com

Lytle Signs, Inc.

1925 Kimberly Rd

Twin Falls, ID 83303

T: 208-733-1739 F: 208-735-5903

mel@lytlesigns.com

Lytle Signs President

JJ McBride

2.3 PROJECT REVIEW

- (1) Bridge & Supports constructed from weathering steel per stamped engineered drawings
- (2) Sets of Reverse Pan Channel letters reading “Twin Falls”
- (4) Sign panel backgrounds
- (2) Color Electronic Message Centers
- (1) Illuminated City and County Logos
- (2) Weathering steel simulated canyon walls
- (4) “U” shaped clear polycarbonate climbing deterrents
- (1) Donor sign

Set donor bricks and reset pavers

Proposal Pricing \$347,353.00



2.2 TABLE OF CONTENTS (ALL CONTENT IS PROPRIETARY AND CONFIDENTIAL)

PAGE 3	CORPORATE AND COMPANY INFORMATION
PAGE 4	FINANCIAL STABILITY
PAGE 5	REFERENCES
PAGE 6	RESPONSE TO REQUIREMENTS
PAGE 7	RESPONSE TO REQUIREMENTS
PAGE 8	PRODUCT FEATURES, IMPLEMENTATION
PAGE 9	PRELIMINARY PROJECT SCHEDULE
PAGE 10	ACCEPTANCE TESTING, WARRANTY/MAINTENANCE SUPPORT
PAGE 11	SAMPLE AGREEMENTS/CONTRACTS, EXCEPTIONS, ADDITIONAL INFORMATION
PAGE 12	STATEMENT OF COMPLIANCE
PAGE 13-17	PROPOSAL
PAGE 18	APPENDIX A – FINANCIAL STABILITY LETTER
PAGE 19	APPENDIX B – WARRANTY/MAINTENANCE SUPPORT
PAGE 20	APPENDIX C – WARRANTY/MAINTENANCE SUPPORT
PAGE 21	APPENDIX D – EXAMPLE #1 – FIRST FEDERAL
PAGE 22	APPENDIX E – EXAMPLE #2 – TWIN FALLS REFORMED CHURCH
PAGE 23	APPENDIX F – EXAMPLE #3 – SINCLAIR HI RISE
PAGE 24-25	APPENDIX G & H – EXAMPLE #4 – LYNCH OIL HI RISE
PAGE 26-27	APPENDIX I & J – EXAMPLE #4 CSI



2.4 SECTION 2 – CORPORATE AND COMPANY INFORMATION

Lytle Signs, Inc. Your National Connection in the Northwest

Since 1948, Lytle Signs has strived to produce the finest sign related products possible. As we have grown in size, our commitment to that mission has remained constant. We are committed to our customers and have been honored to have our customers return that commitment and loyalty. They have come to realize that their business image is our only business. We take great pride in that trust.

We've worked hard for our good reputation and we'll work hard for you.

We offer custom electric signs, corporate signage, non-illuminated signs, neon signs, electronic message centers, free standing signs, fuel price signs, monument signs, awnings, real estate signs, traffic signs, vacuum formed signs, vehicle graphics, vehicle lettering, window lettering, vinyl decals, complete sign packages and more. In addition, we offer sign installation, sign service and repair in Idaho, Nevada, Utah, Wyoming, Oregon and Montana. We will manufacture, permit and install your complete sign package, or manufacture and ship your sign package directly to you.

To familiarize you with Lytle Signs, Inc., a brief description of our equipment and capabilities includes the following:

- In business since 1948 with offices in Twin Falls and Meridian, Idaho
- Member of World Sign Assoc. with affiliates throughout the United States
- Member of International Sign Association and Northwest Sign Council
- Employ approximately 80 people
- Installation Equipment includes (3) 60' Cranes, (1) 70' Crane, (1) 100' Crane, (1) 146' Crane, (4) remote control service bucket trucks, (10) Service trucks, and (4) scissor lifts.
- Total plant size in excess of 40,000 square feet
- 4 acres of outside storage
- Our crews provide installation throughout Idaho, Nevada, Utah, Oregon, Montana and Wyoming. We contract with a reputable network of sign companies throughout the United States for installations outside these areas.
- Computerized Cad-cam router system for interior and exterior signs, plaques, letters and graphics
- Computerized Water-Jet cutter up to 8' x 12'
- Computerized vinyl cutting and pattern making equipment
- (2) Large format exterior quality digital imaging systems; (1) Grand Format HP Latex Series R-2000 Flat-bed Printer
- Color scanning and reproduction
- Rolls Roller for large scale graphic lamination up to 8' x 18'
- Manufacture electric, neon, plastic, painted and sandblasted signs, and illuminated awnings
- Manufacturing vacuum-formed faces up to 8' x 16'
- State of the art neon glass manufacturing equipment and facility in Meridian, ID location
- Manufacture and install custom store fronts and fascia
- (2) Spray booths; (1) spray bake system, one 54' in length
- Provide installation work for several national companies and franchises
- Manufacture and install many types of electric and electronic signage that we own and lease and/or maintain for customers from Idaho, Northern Nevada, Utah, Wyoming, Montana and Oregon
- All of the necessary workers' compensation, property and casualty insurance; licenses and bonds in force in areas where necessary

In addition to our main focus of custom electric signs, we manufacture for regional and national companies including, but not limited to, Tesoro Petroleum, IHOP Restaurants, Sinclair Oil, Wal-Mart and Arctic Circle Restaurants.

In addition to our main plant in Twin Falls, Idaho, Lytle Signs, Inc. has a 10,000 square foot office in Meridian, Idaho (opened in 2006) with light fabrication capability. All of our signs are manufactured to Underwriters Laboratories specifications and are UL labeled with UL Green Energy Verified certification. Lytle Signs, Inc. is committed to keeping abreast of the newest and most effective production materials and procedures.



2.5 SECTION 3 – FINANCIAL STABILITY

Letter of Financial Stability by Lytle Signs President – JJ McBride

Please see **Appendix A**



2.6 SECTION 4 – REFERENCES

First Federal Bank, PO Box 249, Twin Falls, ID 83303

Contact info – Ashley Frodin, Marketing Director 208-933-3412 afroding@bankfirstfed.com

Boise Stage Stop, 23801 S. Orchard Access Road, Boise, ID 83716

Contact info - Bob French - Owner 208-343-1963 rfrenchwts@aol.com

Westmark Credit Union, 2520 Channing Way, Idaho Falls, ID 83403

Contact info – Gil Birdsong 208-528-8315 gbirdsong256@westmark.org

Pioneer Federal Credit Union, 250 W 3rd South, Mt Home, ID 83647

Contact info – Elizabeth Thomas 208-587-3304 x 1147 ethomas@pioneerfcu.org

Clif Bar, 556 Champlin Way South, Twin Falls, ID 83301

Contact info – Dale 507-291-1178 dducommun@clifbar.com

Stinker Stores, 3184 Elder St, Boise, ID 83706

Contact info - Roger Titmus 208-991-5728 rtitmus@stinker.com

Sinclair Oil, PO Box 30825, SLC, UT 84130

Contact info – Ron Mrocek 801-254-2744 rmrocek@sinclairoil.com

Lynch Oil, PO Box 790, Burley, ID 83318

Contact info – Jim Lynch 208-678-9007 jim@mrgas.com



2.7 SECTION 5 – RESPONSE TO REQUIREMENTS

2.71 Archway

In manufacturing, the archway components will be constructed using all weathering steel and will be placed at the location set forth on the site plan provided. Two one-inch conduit for electrical wiring and network cable will be concealed within the structure. Two two-inch conduit will be installed on both the city park side and the court house side and will lead to a locking and tamper proof accessible electrical boxes hidden in the structure. The archway will be transported from our facility to site and set in place while the road is closed between the hours of 7PM and 7AM, and will be time coordinated with city officials. Welding will be done by certified welders both in our manufacturing facility and on site.

2.7.2 Archway Electrical

Lytle Signs has an in-house Electrician and will meet all state UL listing requirements.

2.7.3 Fabricated Canyon Walls

The simulated canyon walls will be built using 3/16" weathering steel and shaped to resemble the Snake River canyon walls.

2.7.6 Climbing Deterrent

(4) clear polycarbonate panels will be formed and place on the outside edges of the structure to help prevent climbing.

2.7.5 Electronic Message Centers

The electronic message centers typically take five to six weeks to arrive after ordered and will be connected by our in-house electrician. Message centers will be compatible and controlled by Navori software and meet the bid guidelines. Customer to provide Navori player.

2.7.6 Twin Falls Lettering

(2) Sets of reverse pan channel letters reading "TWIN FALLS" will be manufactured and installed at the center of the structure with blue LED halo illumination and they will be UL listed.

2.7.7 Twin Falls City and County Logos

The signs will be manufactured using aluminum and will have LED technology for longevity. All electrical wiring will be done within the sign body and they will be UL listed.

2.7.8 Works Hours

Work will be coordinated with city and county personnel to avoid any interference with park or county events.

2.7.9 Traffic/Barricades

All lane or road closures will be permitted and coordinated with city officials, police and Twin Falls Street Department and Parks Department.



2.7.10 Permits

All applicable permits will be applied for by Lytle Signs a licensed State of Idaho contractor.

All welding will be done by certified welders both in our shop and on site at installation. A third party inspection firm will inspect concrete/rebar placement and field welding. Concrete test cylinders to be taken by special inspector and tested for compression strength as indicated by engineering.

2.7.11 Tree/Pole Removal

Tree removal permit will be applied for and the tree and stump will be removed by an approved tree care provider listed by the city. Removal will be coordinated with Parks and Recreation dept.

2.7.12 Donation Recognition and Services

City Park– Donor bricks will be set at base of simulated canyon wall base

County (rose garden side) – Remove and reinstall existing pavers as needed with flexibility on design which will be determined at a later date.

2.7.13 Sprinkler System, Grass and Sidewalks

All sprinkler systems and grass will be repaired and the sidewalk will be preserved and returned to functioning order at the end of the project.

2.7.14 Cleaning

The high traffic areas will be kept in an orderly fashion during construction and cleaned up by the end of every shift.

2.7.15 Documentation

Lytle Signs will provide all documentation as needed.



2.8 SECTION 6 – PRODUCT FEATURES

All weathering steel by reputable steel companies (due to wide variations in steel pricing these companies may vary)

Electronic Message Centers will be provided by Daktronics, Inc.

All signage will be built by Lytle Signs, Inc. and will be state required UL listed.

All electrical needs will be provided by Lytle Signs, Inc.

2.9 SECTION 7 - IMPLEMENTATION

Project Manager – Mel Stokesberry

Mel has more than forty years' experience in manufacturing, design and installation of large complex projects. Mel is a key employee at Lytle Signs and is typically charged with managing all large scale projects. Recently Mel led brand conversion projects at 30 sites all over Colorado acquired by Stinker Stores. Designed and constructed the 85 foot high rise electronic message project at the Boise Stage Stop, and oversaw the design and construction of a new monument sign with electronic message centers at the College of Eastern Idaho.

Co-Project Manager – Stacy Mavencamp

Stacy has been with Lytle Signs for 7 years and will assist Mel with all administrative needs, permitting, ordering and coordinating schedules. Stacy will also service as the main contact for all city and/or county personnel.

Production Manager – Phil Briggs

Phil has over 20 years of experience in fabrication and he oversees a shop of 25 employees in all aspects of manufacturing.

Installation manager - Paul Groninga

Paul has 12 years of experience in organizing, mobilizing and directing field installation crews.

VP of Operations – Mark Crider

Responsible for manufacturing and quality assurance of custom fabrication. Mark had over 35 years of experience in the manufacturing industry and with Lytle Signs.



Preliminary Project Schedule

Starting from day 1, all applicable permitting will be submitted within 5 days.

Week 1 – Materials will be sourced and ordered. Message centers will be ordered and site visit with crews to review project. Start preliminary scheduling.

Week 3 – Start manufacturing as materials are delivered. Logo signs will be started.

Week 4 – Construction continues.

Week 5 – Construction continues and excavation and pole setting begins.

Week 6 – Crews on site removing pavers and set up staging area

Week 7 – Donor sign completed and ready for install

Week 9 – Fence off staging area and begin moving completed sections to staging area

Week 11 – Installation week. Road Closure between the hours of 7PM – 7AM

Week 12 – Landscape and sprinkler repair

Week 13 – Job completed and City site walk through

Schedule is subject to change depending on product delivery and weather related issues.

Archway

Manufacturing the archway package will commence once all permits are approved and acquired. The electronic message centers would be ordered at that time and typically take five to six weeks to arrive. The structure will be built using weathering steel and follow the engineered stamped drawings provided in the bid packet. The signs will be manufactured using aluminum and will have LED technology for longevity and have the State required UL listing. All electrical wiring will be done within the sign body and will be connected by our in-house electrician. The archway will be transported from our facility to site and set in place while the road is closed between the hours of 7PM and 7AM, and will be time coordinated with city officials. Welding will be done by certified welders both in our manufacturing facility and on site.

Donor Sign

Manufacturing the donor sign will also commence once all permitting has been approved. The flat cut out aluminum archway will be powder coated a simulated rust to match the full sized version. The aluminum letters will be powder coated white. We will recreate the donor logos and designs using our state of the art printer.



Final

After final installation, all areas will be cleaned of all debris and it will be hauled away from the site. All sprinklers will be in working order. Committee personnel will be asked to do a site visit and a completion form will need to be signed.

Safety

Our safety officer will make periodical visits to site during installation. Workers will adhere to all OSHA safety guidelines and all crane operators have the required certification in crane operations.

Changes

Changes in the scope of work, scheduling, cost overruns and quality issues will have a verbal and an E-mail communication stream internally and externally as needed. The project manager, production manager and the install manager will be key to the success of this project.

2.10 SECTION 8 – ACCEPTANCE TESTING

A final inspection with both company and City officials will be completed as soon as installation is completed. If any deficiencies are found they should be noted on a punch list and provided to Lytle Signs in a timely fashion. Lytle Signs will address and/or correct all items listed on punch list within 30 days.

Final documentation will be provided to the City from all special inspection testing.

2.11 SECTION 9 – WARRANTY/MAINTENANCE SUPPORT

APPENDIX B – GENERAL SIGN CARE AND MAINTENANCE

APPENDIX C – WARRANTY LETTER



2.12 SECTION 10 – SAMPLE AGREEMENTS/CONTRACTS

2.12.1 Terms and Conditions

Proposal - APPENDIX 1.1

2.12.2 Workers Compensation Act Coverage and Compliance with Other Laws

If awarded the bid Lytle Signs will supply all necessary insurance documents required.

2.13 SECTION 11 – EXCEPTIONS

Due to lack of enough information on the both paver location and donor brick location we respectfully ask for possibility of a change order regarding costs.

2.14 SECTION 12 – ADDITIONAL INFORMATION

We reserve the right to add additional information as it becomes necessary.



2.16 SECTION 14 – STATEMENT OF COMPLIANCE

Statement of Compliance

Instructions: Identify the page of the response and check Yes, No, or N/A for Compliance

Page	Compliant			Compliant Category
	Yes	No	N/A	
1				Executive Summary
3				Corporate and Company Information
4				Financial Stability
5				References
6				Response to Requirements
6				Archway
6				Archway Electrical
6				Fabricated Canyon Walls
6				Climbing Deterrent
6				Electronic Message Centers with Navori
6				Twin Falls Lettering
6				Twin Falls City and County Logos
6				Work Hours
6				Traffic/Barricades
7				Permits
7				Donation and Recognition Services
7				New Donation Bricks
9				Donation Sign
1				Rose Garden Existing Donation Bricks
1				Volunteer Services Twin Falls Canal Company
1				Volunteer Services Petruzzelli Electric
1				Volunteer Services Complete Crane Services
1				Volunteer Services - Anonymous
7				Sprinkler Systems, Grass Sidewalks
7				Cleaning
7				Documentation/As Built, Operational, Maintenance
8				Product Features
8				Implementation
10				Acceptance Testing
10				Warranty/Maintenance
11				Sample License Agreements/Contracts
11				Workers Compensation
11				Exceptions
11				Additional Information
13				Pricing
				Statement of Compliance



Lytle Signs Inc.

Twin Falls Office

P.O. Box 305 1925 Kimberly Rd.
 TWIN FALLS, IDAHO 83303
 208.733.1739 fax 208.736.8653
 1.800.621.6836

Boise/Meridian Office

2070 Commercial St.
 MERIDIAN, IDAHO 83642
 208.388.1739 fax 208.388.3966
 Web Site: www.lytlesigns.com
 E-mail: sales@lytlesigns.com

PROPOSAL

Proposal #: 24791

Proposal Date: 08/29/19
Customer #: 5147
Page: 1 of 5
Salesperson: BB

SOLD TO:	JOB LOCATION:
TWIN FALLS CITY ARCHWAY COMMITTEE TBD TWIN FALLS ID 83301	Twin Falls City Archway Committee Twin Falls ID 83301 REQUESTED BY: Rex Lytle

AS PER SKETCH (IF PROVIDED BY LYTLE SIGNS, INC)

1	<p>QUOTE #39884 Twin Falls Entry Archway - Materials Materials for a 30' x 113'2" overall size double face entry archway</p> <p>1 - Bridge & Supports constructed from weathering steel square & rectangle tube with natural rust finish (See stamped engineered plans)</p> <p>2 - (2) Sets of reverse pan channel letters, aluminum faces & 2" aluminum returns painted Blue PMS 3015 C, clear polycarbonate backs, Blue halo illumination, and .080 aluminum shaped backer panel powder coated Silver</p> <p>3 - (4) Sign panel backgrounds, 2" weathering steel square tube frame (See stamped engineered plans), .080 aluminum cladding painted Duranodic Bronze (Both sides)</p> <p>4 - (2) Color LED EMCs with cellular communication compatible with Navori & capable of displaying Amber Alerts Daktronics GS6 15.85MM 100 x 200 matrix, mounted on each side of arch above oncoming traffic</p> <p>5 - (1 Ea.) Illuminated city & county logos, fabricated aluminum cabinet & retainers painted Duranodic Bronze, internal white LED illumination, clear polycarbonate faces with second surface color on color digitally printed logos, flush mounted to frame</p> <p>6 - (2) Simulated canyon walls, internal steel framework (See stamped engineered plans), 10 gauge weathering steel plate covers cut and welded together with natural rust finish & random etching to create color variation Note: Elements to be designed to deter climbing structure</p> <p>7 - (4) "U" shaped clear polycarbonate installed over steel beams on first sections of structure to prevent climbing</p> <p>Note: All exposed steel elements fabricated with weathering steel</p>	\$227,990.00	\$227,990.00
1	<p>QUOTE #39885 Twin Falls Entry Archway - Labor & Concrete Labor for a 30' x 113'2" overall size double face entry archway</p>	\$119,363.00	\$119,363.00

Lytle Signs, Inc. is Licensed in: Idaho, Utah, Oregon, Wyoming, Montana & Nevada (0029311 - \$750,000)

COMPANY INITIALS _____



Lytle Signs Inc.

Twin Falls Office

P.O. Box 305 1925 Kimberly Rd.
TWIN FALLS, IDAHO 83303
208.733.1739 fax 208.736.8653
1.800.621.6836

Boise/Meridian Office

2070 Commercial St.
MERIDIAN, IDAHO 83642
208.388.1739 fax 208.388.3966
Web Site: www.lytlesigns.com
E-mail: sales@lytlesigns.com

PROPOSAL

Proposal #: 24791

Proposal Date: 08/29/19
Customer #: 5147
Page: 2 of 5
Salesperson: BB

1 - Bridge & Supports constructed from weathering steel square & rectangle tube with natural rust finish (See stamped engineered plans)

2 - (2) Sets of reverse pan channel letters, aluminum faces & 2" aluminum returns painted Blue PMS 3015 C, clear polycarbonate backs, Blue halo illumination, and .080 aluminum shaped backer panel powder coated Silver

3 - (4) Sign panel backgrounds, 2" weathering steel square tube frame (See stamped engineered plans), .080 aluminum cladding painted Duranodic Bronze (Both sides)

4 - (2) Color LED EMCs with cellular communication compatible with Navori & capable of displaying Amber Alerts
Daktronics GS6 15.85MM 100 x 200 matrix, mounted on each side of arch above oncoming traffic

5 - (1 Ea.) Illuminated city & county logos, fabricated aluminum cabinet & retainers painted Duranodic Bronze, internal white LED illumination, clear polycarbonate faces with second surface color on color digitally printed logos, flush mounted to frame

6 - (2) Simulated canyon walls, internal steel framework (See stamped engineered plans), 3/16" weathering steel plate covers cut and welded together with natural rust finish & random etching to create color variation
Note: Elements to be designed to deter climbing structure

7 - (4) "U" shaped clear polycarbonate installed over steel beams on first sections of structure to prevent climbing

Note: All exposed steel elements fabricated with weathering steel

** Due to the volatility of steel prices, you may see a price increase in the final cost of this proposal

ACQUISITION OF PERMITS AND PERMIT COSTS WILL BE BILLED IN ADDITION (IF APPLICABLE)
ELECTRICAL REPAIRS WILL BE BILLED IN ADDITION AT TIME AND MATERIAL RATES (IF APPLICABLE)
****THIS PROPOSAL MAY BE WITHDRAWN, AND PRICING MAY CHANGE IF NOT ACCEPTED WITHIN 7 DAYS**

TOTAL PROPOSAL AMOUNT: \$347,353.00

TERMS: 50.0% DOWN, BALANCE DUE ON COMPLETION
(INTEREST OF 1.5% PER MONTH WILL BE ADDED TO PAST DUE ACCOUNTS)

TERMS AND CONDITIONS

1. THIS PRICE DOES NOT INCLUDE ELECTRICAL HOOKUP, PERMITS, OR STAMPED ENGINEERED DRAWINGS UNLESS SPECIFICALLY STATED.
2. WORK WILL NOT BEGIN UNTIL DOWN PAYMENT AND WRITTEN ACCEPTANCE IS RECEIVED. ANY ALTERATION FROM THE ABOVE SPECIFICATIONS INVOLVING EXTRA COSTS, WILL BE EXECUTED ONLY UPON WRITTEN ORDERS, AND WILL BECOME AN EXTRA CHARGE OVER AND ABOVE THE ESTIMATE TO BE PAID BY THE PURCHASER.
3. UPON DEFAULT IN THE PAYMENT OF ANY SUMS HEREIN AGREED, LYTLE SIGNS MAY, AT ITS OPTION, DECLARE THE ENTIRE BALANCE PRICE FULLY DUE AND PAYABLE WITHOUT FURTHER NOTICE TO CUSTOMER; AND WHEN DECLARED, CUSTOMER AGREES TO PAY INTEREST ON SAID BALANCE WHEN DECLARED DUE AT THE RATE OF 1.5% PER MONTH. CUSTOMER FURTHER AGREES TO PAY ALL REASONABLE COSTS OF COLLECTION OF SAID BALANCE INCURRED BY THE COMPANY, INCLUDING ATTORNEY'S FEES.
4. CUSTOMER AGREES TO PROVIDE ELECTRICAL SERVICE FEED WIRE OF APPROVED AND SUITABLE CAPACITY TO LOCATION OF DISPLAY IN ADVANCE OF INSTALLATION.
5. AN ADDITIONAL CHARGE WILL BE MADE IF DURING EXCAVATION UNFORESEEN CIRCUMSTANCES ARISE OR IF RESTORATION OF EXISTING LANDSCAPING IS REQUIRED.
6. ALL AGREEMENTS ARE CONTINGENT UPON THE ABSENCE OF STRIKES, DELAYS, OR INCIDENTS BEYOND LYTLE SIGNS, INC. CONTROL.
7. QUOTED PRICE DOES NOT INCLUDE ELECTRICAL SERVICE TO OPERATE PROPOSED SIGN OR LIGHTING. ADDITIONAL CHARGES MAY APPLY TO BRING CURRENT ELECTRIC SERVICE AND SIGNAGE TO CODE. ELECTRICAL COMPONENTS WILL COMPLY WITH 120V SERVICE UNLESS OTHERWISE SPECIFIED.
8. INITIAL DESIGN IS INCLUDED IN QUOTE PRICE. CHANGES REQUIRING ADDITIONAL SKETCH TIME WILL BE DONE AT AN HOURLY RATE. REQUEST FOR LOGOS ON CD OR MEMORY STICKS WILL RESULT IN ADDITIONAL CHARGES.

Lytle Signs, Inc. is Licensed in: Idaho, Utah, Oregon, Wyoming, Montana & Nevada (0029311 - \$750,000)

COMPANY INITIALS _____

CUSTOMER INITIALS _____



Lytle Signs Inc.

Twin Falls Office

P.O. Box 305 1925 Kimberly Rd.
TWIN FALLS, IDAHO 83303
208.733.1739 fax 208.736.8653
1.800.621.6836

Boise/Meridian Office

2070 Commercial St.
MERIDIAN, IDAHO 83642
208.388.1739 fax 208.388.3966
Web Site: www.lytlesigns.com
E-mail: sales@lytlesigns.com

PROPOSAL

Proposal #: 24791

Proposal Date: 08/29/19
Customer #: 5147
Page: 3 of 5
Salesperson: BB

9. THE TIME INTERVAL FOR PROJECT COMPLETION WILL BEGIN WHEN ALL PERTINENT INFORMATION AND PERMITS ARE RECEIVED BY ENGINEERING.

THIS PROPOSAL DOES NOT BECOME EFFECTIVE UNTIL SIGNED AND DATED BY AN AUTHORIZED LYTLE SIGN'S REPRESENTATIVE.

SALESPERSON: _____

DATE: _____

ACCEPTED BY: _____

TITLE: _____

SIGNATURE: _____

DATE: _____

Lytle Signs, Inc. is Licensed in: Idaho, Utah, Oregon, Wyoming, Montana & Nevada (0029311 - \$750,000)

COMPANY INITIALS _____

CUSTOMER INITIALS _____



Lytle Signs Inc.

Twin Falls Office

P.O. Box 305 1925 Kimberly Rd.
 TWIN FALLS, IDAHO 83303
 208.733.1739 fax 208.736.8653
 1.800.621.6836

Boise/Meridian Office

2070 Commercial St.
 MERIDIAN, IDAHO 83642
 208.388.1739 fax 208.388.3966
 Web Site: www.lytlesigns.com
 E-mail: sales@lytlesigns.com

DEPOSIT INVOICE

Invoice #: DP24791

Inv Date: 08/29/19
Customer #: 5147
Page: 4 of 5

SOLD TO:	JOB LOCATION:
TWIN FALLS CITY ARCHWAY COMMITTEE TBD TWIN FALLS ID 83301	Twin Falls City Archway Committee Twin Falls ID 83301 REQUESTED BY: Rex Lytle

ORDERED BY	PO NUMBER	SALESPERSON	PAYMENT TERMS
Rex Lytle		BB	50.0% Due Upon Receipt

	DESCRIPTION		TOTAL PRICE
1	<p>QUOTE #39884 Twin Falls Entry Archway - Materials Materials for a 30' x 113'2" overall size double face entry archway</p> <p>1 - Bridge & Supports constructed from weathering steel square & rectangle tube with natural rust finish (See stamped engineered plans)</p> <p>2 - (2) Sets of reverse pan channel letters, aluminum faces & 2" aluminum returns painted Blue PMS 3015 C, clear polycarbonate backs, Blue halo illumination, and .080 aluminum shaped backer panel powder coated Silver</p> <p>3 - (4) Sign panel backgrounds, 2" weathering steel square tube frame (See stamped engineered plans), .080 aluminum cladding painted Duranodic Bronze (Both sides)</p> <p>4 - (2) Color LED EMCs with cellular communication compatible with Navori & capable of displaying Amber Alerts Daktronics GS6 15.85MM 100 x 200 matrix, mounted on each side of arch above oncoming traffic</p> <p>5 - (1 Ea.) Illuminated city & county logos, fabricated aluminum cabinet & retainers painted Duranodic Bronze, internal white LED illumination, clear polycarbonate faces with second surface color on color digitally printed logos, flush mounted to frame</p> <p>6 - (2) Simulated canyon walls, internal steel framework (See stamped engineered plans), 10 gauge weathering steel plate covers cut and welded together with natural rust finish & random etching to create color variation Note: Elements to be designed to deter climbing structure</p> <p>7 - (4) "U" shaped clear polycarbonate installed over steel beams on first sections of structure to prevent climbing</p> <p>Note: All exposed steel elements fabricated with weathering steel</p>	\$227,990.00	\$227,990.00
1	<p>QUOTE #39885 Twin Falls Entry Archway - Labor & Concrete Labor for a 30' x 113'2" overall size double face entry archway</p> <p>1 - Bridge & Supports constructed from weathering steel square & rectangle tube with natural rust finish (See stamped engineered plans)</p>	\$119,363.00	\$119,363.00

PLEASE PAY THIS DEPOSIT AMOUNT: Continued



Lytle Signs Inc.

Twin Falls Office

P.O. Box 305 1925 Kimberly Rd.
 TWIN FALLS, IDAHO 83303
 208.733.1739 fax 208.736.8653
 1.800.621.6836

Boise/Meridian Office

2070 Commercial St.
 MERIDIAN, IDAHO 83642
 208.388.1739 fax 208.388.3966
 Web Site: www.lytlesigns.com
 E-mail: sales@lytlesigns.com

DEPOSIT INVOICE

Invoice #: DP24791

Inv Date: 08/29/19
Customer #: 5147
Page: 5 of 5

SOLD TO:	JOB LOCATION:
TWIN FALLS CITY ARCHWAY COMMITTEE TBD TWIN FALLS ID 83301	Twin Falls City Archway Committee Twin Falls ID 83301 REQUESTED BY: Rex Lytle

ORDERED BY	PO NUMBER	SALESPERSON	PAYMENT TERMS
Rex Lytle		BB	50.0% Due Upon Receipt

DESCRIPTION	TOTAL PRICE
<p>2 - (2) Sets of reverse pan channel letters, aluminum faces & 2" aluminum returns painted Blue PMS 3015 C, clear polycarbonate backs, Blue halo illumination, and .080 aluminum shaped backer panel powder coated Silver</p> <p>3 - (4) Sign panel backgrounds, 2" weathering steel square tube frame (See stamped engineered plans), .080 aluminum cladding painted Duranodic Bronze (Both sides)</p> <p>4 - (2) Color LED EMCs with cellular communication compatible with Navori & capable of displaying Amber Alerts Daktronics GS6 15.85MM 100 x 200 matrix, mounted on each side of arch above oncoming traffic</p> <p>5 - (1 Ea.) Illuminated city & county logos, fabricated aluminum cabinet & retainers painted Duranodic Bronze, internal white LED illumination, clear polycarbonate faces with second surface color on color digitally printed logos, flush mounted to frame</p> <p>6 - (2) Simulated canyon walls, internal steel framework (See stamped engineered plans), 3/16" weathering steel plate covers cut and welded together with natural rust finish & random etching to create color variation Note: Elements to be designed to deter climbing structure</p> <p>7 - (4) "U" shaped clear polycarbonate installed over steel beams on first sections of structure to prevent climbing</p> <p>Note: All exposed steel elements fabricated with weathering steel</p> <p>** Due to the volatility of steel prices, you may see a price increase in the final cost of this proposal</p>	
TOTAL PROPOSAL AMOUNT	\$347,353.00
*** FINAL INVOICE AMOUNT MAY VARY UPON COMPLETION ***	
PLEASE PAY THIS DEPOSIT AMOUNT:	\$173,676.50



August 27, 2019

To whom it may concern:

I certify that Lytle Signs, Inc. meets the minimum qualifications to be considered for the Archway Project in Twin Falls, Idaho.

1. We have been in business for 71 years here in Twin Falls, Idaho
2. We have no bankruptcy filings in the past 60 months
3. We have no current or pending lawsuits for performance related issues
4. We have no performance related issues within the last 24 months

Sincerely,

A handwritten signature in blue ink, appearing to read "JJ McBride", is written over a light blue horizontal line.

JJ McBride
President
Lytle Signs, Inc.
An Employee Owned Company

Appendix A – Financial Stability Letter





General Sign Care and Maintenance

Polycarbonate and Acrylic Sign Faces: Clean with a mild detergent and water solution. Use a soft damp cloth to lightly wipe or dry the faces (like a chamois cloth) to decrease the chances of scratches from dust particles.

Aluminum Cabinets: Clean with a mild detergent and water solution and allow to air dry.

Illumination Issues: A licensed sign service company or a licensed electrician should handle all illumination issues.

Preventative Action: Lawn irrigation sprinklers should be directed away from all signs. Repetitive watering will leave unsightly hard water stains and could possibly prematurely degrade signage.

APPENDIX B – WARRANTY/MAINTENANCE SUPPORT

NEON • PLASTIC • ELECTRONIC • VACU-FORMED • ARCHITECTURAL • ILLUMINATED AWNINGS
P.O. Box 305 1925 Kimberly Rd. Twin Falls Idaho 83303-0305 208-735-1739 fax 208-736-5653 1-800-621-6836
Boise/Meridian Office 2070 East Commercial Street 208-385-1739 fax 208-386-3966
LICENSED IN IDAHO, MONTANA, NEVADA, OREGON, UTAH, AND WYOMING © 0029311 www.lytlesigns.com





WARRANTY

Lytle Signs, Inc. warrants the following to the purchaser of a Lytle Signs Inc. sign, subject to the conditions herein provided:

Sign Structure and Sign: During the first year in operation and under normal use and service, should the sign structure or identification/changeable copy sign malfunction due to defects in workmanship or materials, Lytle Signs, Inc. will, at its option, repair or replace any of the defective materials.

L.E.D. Electronic Displays: Lytle Signs, Inc. warrants the L.E.D. Electronic Display to be free from defects in workmanship or materials for a period of five (5) year from the date of installation. Lytle Signs, Inc. will, at its option, repair or replace the malfunctioning or defective part(s). Damage caused by abuse, misuse, misapplication or accidental damage outside of the control of Lytle Signs, Inc. (including lightning), and any consequential or contingent liability is excluded from this warranty.

Additional Warranty Terms: This warranty covers normal use and service. Warranty claims must be registered with Lytle Signs, Inc. within thirty (30) days of damage or malfunction. Lytle Signs, Inc. reserves the right to visit the site of the installation or to require documentation of the claim before assuming any responsibility under the provisions of this warranty. Damaged or defective parts will be covered under this warranty; however, removing and reinstalling these parts is the responsibility of the owner. Lytle Signs, Inc. assumes no liability for damage caused by careless handling or poor installation except for work completed by employees or agents of Lytle Signs, Inc.

Service to a damaged or malfunctioning sign, which has not been ordered or authorized by Lytle Signs, Inc. is not covered under this warranty. If, during the term of warranty as herein provided, the sign is serviced by someone other than Lytle Signs, Inc. or its authorized representatives, this warranty becomes null and void.

Damages caused by or resulting from any act of God, vandalism, fire, lightning, smoke, power surge or water abuse are specifically excluded from warranty coverage. Vandalism is specifically excluded from warranty coverage.

The foregoing warranty is exclusive and in lieu of all other warranties whether written, oral, or implied (including any warranty of merchantability or fitness for purpose).

Company Name

LYTLE SIGNS, INC.

APPENDIX C – WARRANTY/MAINTENANCE SUPPORT

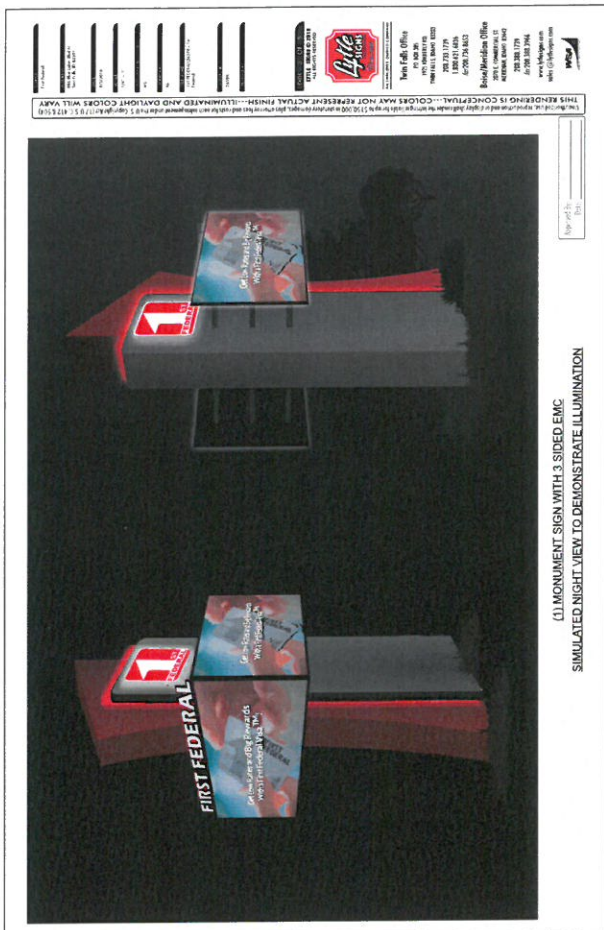
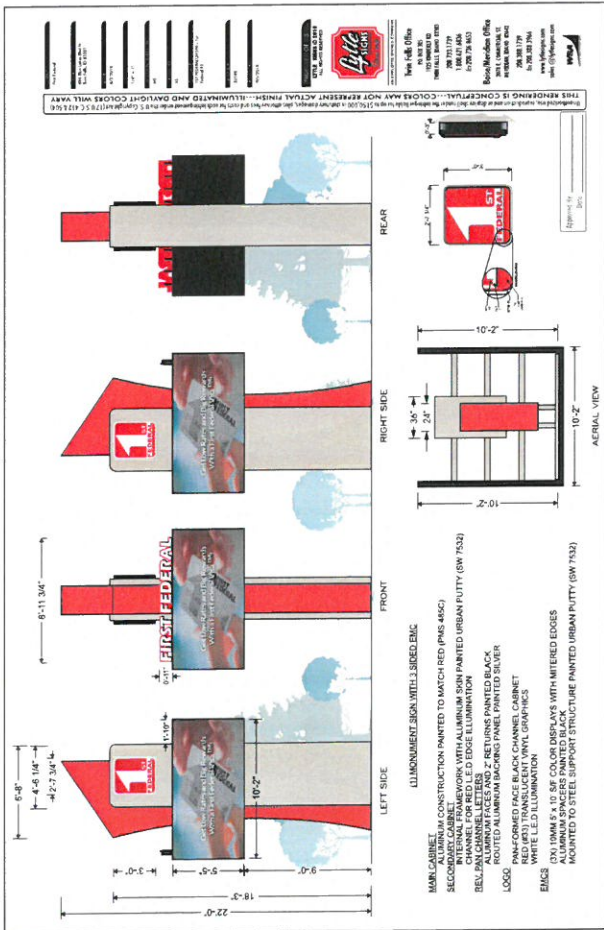
NEON • PLASTIC • ELECTRONIC • VACU-FORMED • ARCHITECTURAL • ILLUMINATED AWNINGS

P.O. Box 305 1925 Kimberly Rd. Twin Falls Idaho 83303-0305 208-735-1739 fax 208-736-6663 1-800-621-6836

Boise/Meridian Office 2070 East Commercial Street 208-388-1739 fax 208-388-3966

LICENSED IN IDAHO, MONTANA, NEVADA, OREGON, UTAH, AND WYOMING 40029311 www.lytlesigns.com



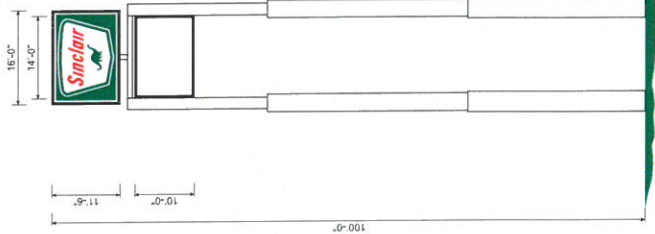
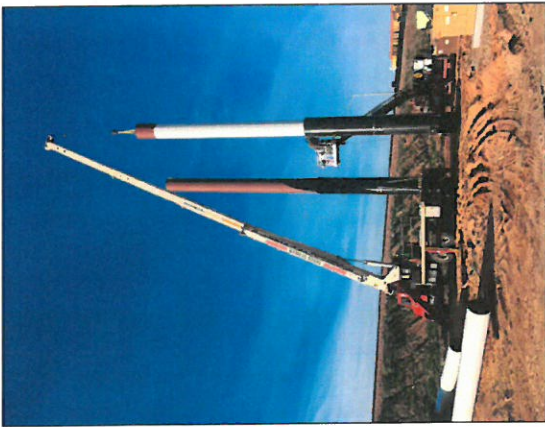
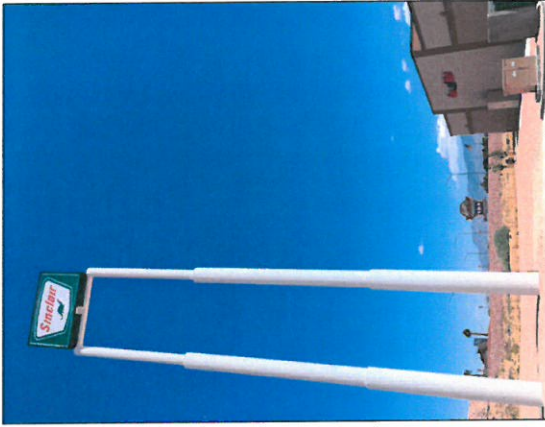




- A—DOUBLE FACE ILLUMINATED SIGN AND ELECTRONIC MESSAGE CENTER
- A—CLOUD STATE CHANNEL MODULES
- WHITE ACRYLIC FACES WITH 1" GOLD JEWELITE TRIM-CAP OVERLAY OF METALIC GOLD AND BLACK VINYL (1/8" WHITE OUTLINE)
- 5" PRE-FINISHED BLACK ALUMINUM RETURNIS WHITE L.E.D. ILLUMINATION
- METAL RAILWAYS AS NEEDED TO STAND-OFF AND SPIN COLUMNS WITH FAUX RUST PAINTED FINISH
- B—JAPPERED METAL COLUMNS WITH FAUX RUST PAINTED FINISH (TUCANOS PATTERN)
- STEEL SUPPORT POLES SET IN CONCRETE EMBEDMENT
- C—25mm, 48 X 112 FULL COLOR L.E.D. MESSAGE3 CENTER WITH LONG RANGE RF CONTROL
- PARTIAL INSET IN COLUMNS TO FLUSH FACE WITH LETTERS ABOVE
- *NOTE O.A. HEIGHT IS APPROXIMATE AND TOB AFTER SURVEY OF WATER RETENTION BASIN SLOPE

MAINTENANCE USE: APPROXIMATION AND DISPLAY SHALL UNDER THE MESSAGES LAMP E FOR UP TO 1500 IN STRUCTURE MESSAGE, PLUS ATTORNEY'S FEES AND COSTS FOR EACH IMPLEMENTATION UNDER THE U.S. COPYRIGHT ACT (17 U.S.C. 412 & 413) AND FEDERAL TRADE COMMISSION ACT (15 U.S.C. 57) FOR UNLAWFUL FINISH—REFER TO COLUMN CALL-OUTS FOR APPROVED COLUMN SPECIFICATIONS

TWIN FALLS	TWIN FALLS BRAND	POLE LINE ID.	6-13-2011	3/8" = 1"	CL	BC	REFORMED	55000	B-95-2011

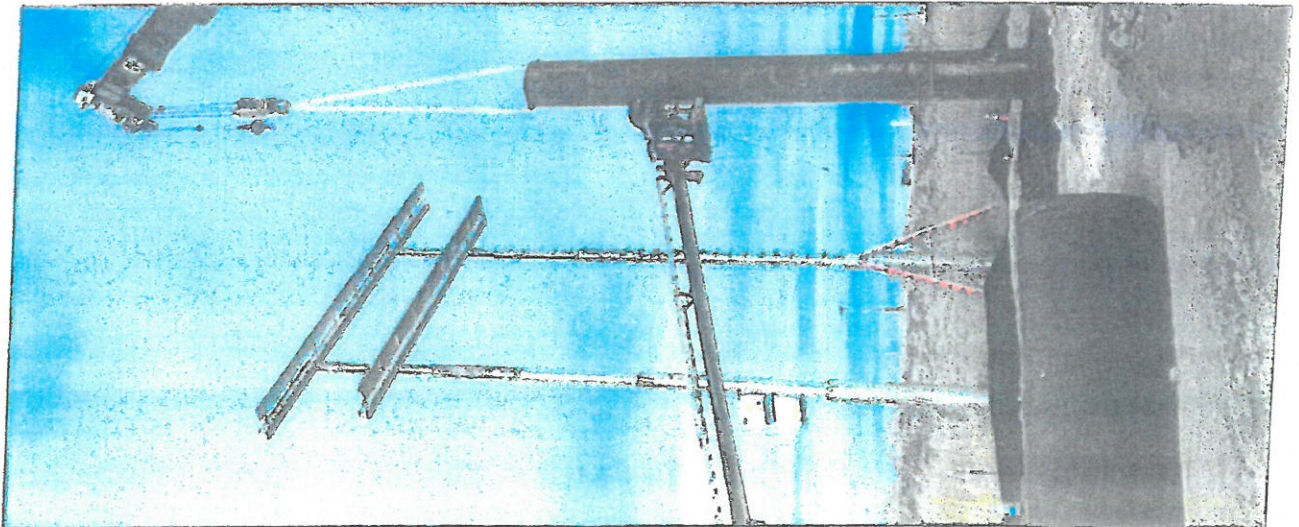
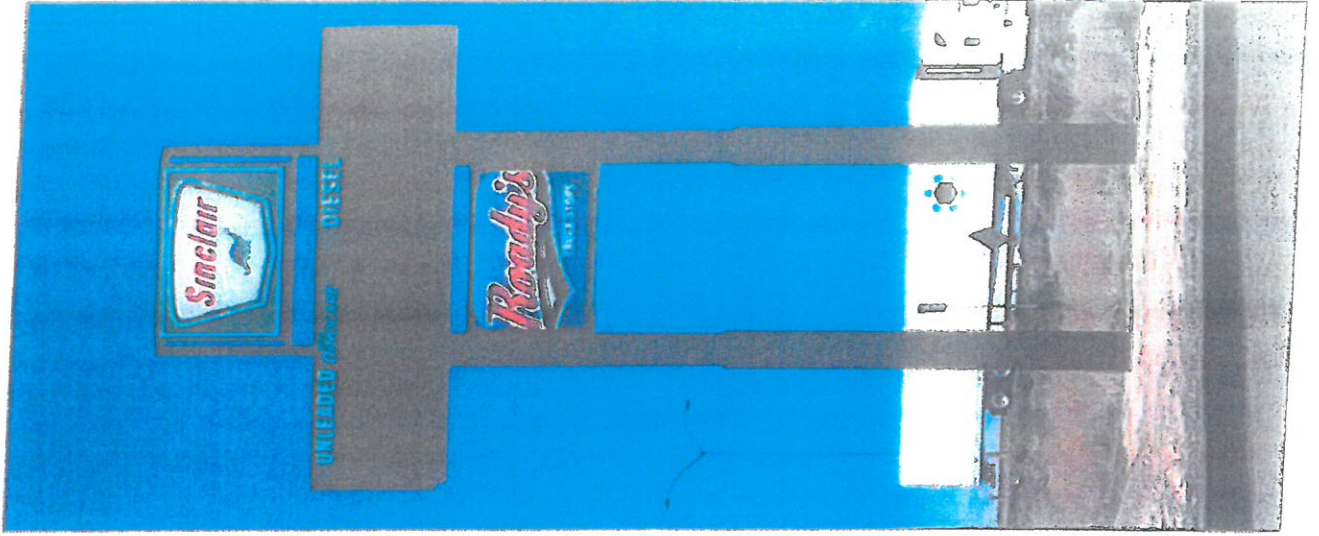


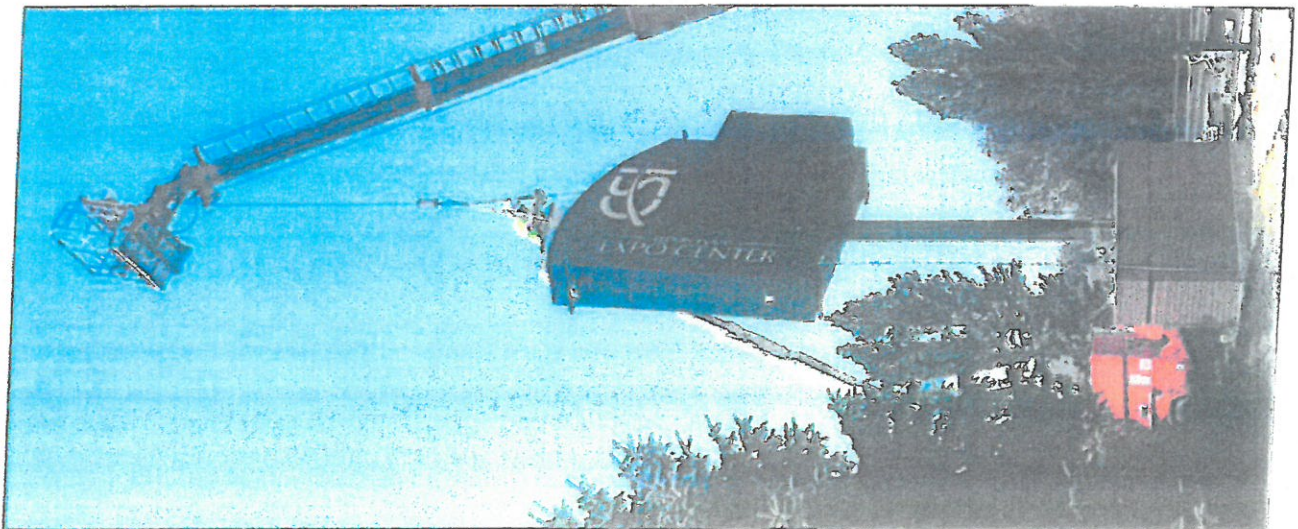
HIGH PULL (SEE SPEC. 0223)
 SINCLAR - ALUMINUM CABINET AND TWO SINCLAR GREEN (PMS 340) WITH INTERNAL LED ILLUMINATION
 WHITE FACES WITH SECOND SURFACE REFLECTION
 GREEN (PMS 340) EXCEPT (4.2) TRANSLUCENT WHITE APPLIED
 SECONDARY SIGN - ALUMINUM CABINET FINISHED BLACK WITH INTERNAL LED ILLUMINATION
 WHITE FACES
 INSTALLED ON STEEL SUPPORT POLES FINISHED WHITE

THIS RENDERING IS CONCEPTUAL--COLORS MAY NOT REPRESENT ACTUAL FINISH--ILLUMINATED AND DAYLIGHT COLORS WILL VARY
 THIS DRAWING IS AN APPROXIMATION AND DOES NOT REPRESENT AN OFFER OF CONTRACT. THE CLIENT SHALL VERIFY ALL DIMENSIONS AND REQUIREMENTS WITH THE LOCAL DEPARTMENT OF PUBLIC WORKS AND THE LOCAL HEALTH DEPARTMENT.

LYTLE SIGNS
 LYTLE SIGNS INC.
 18701 BIRCHMOUNT PIKE
 SUITE 100
 HOUSTON, TEXAS 77058
 PHONE: 281.274.1824
 FAX: 281.274.1823
 WWW.LYTTLESIGNS.COM

BOYCE INDUSTRIES
 BOYCE INDUSTRIES INC.
 2001 W. 10TH STREET
 HOUSTON, TEXAS 77058
 PHONE: 281.274.1824
 FAX: 281.274.1823
 WWW.BI-USA.COM





Twin Falls Community Foundation Balance

Large Spots	4949	
Brick donation	12171.32	
	121818	
	138938.32	
Bank Fees	91.3	
Operating Expense	2.5	
Admin Fees	1500	
	1593.8	
TFCF Balance 9/4/19	137344.52	
City Pledge 2019	150000	
City Pledge 2016	43000	
Crane Service In-Kind	1700	
Ruby Thomas	250	
Greg Lanting	100	
Brick Sale - Tara	100	
Travis Rothweiler	250	
Middlekauf Donated	2000	
Middlekauf Pledged	2000	
<i>Total Other Donations/Pledges</i>	<i>199400</i>	
Engineering	-4975	
Engineering modification to smaller footing 12x15x6	-272.5	
Twin Falls Community Foundation	-1500	
Easement	-2005	
Power & Data to Base		Pay from Li
Bore from Bathroom to Archway for power/network	-4727	
Navori	-600	
Recognition Bricks	-1250	
Tree	-500	
Ruby Thomas PP Fee	-5.8	
Travis Rothweiler PP Fee	-5.8	
Member Recognition Sign		Include on
<i>Total Expenses</i>	<i>-15841.1</i>	
Total Available	320903.42	
Lytle Bid	347353	
Lytle Bid Reduction for In-Kind	-21461	
	325892	
Amount Needed to Begin	\$ 4,988.58	

127201047073

Other Expenses paid by members	
Fees for Beer Fest	-50
Prize money awarded	-500

ne Item

recognition?